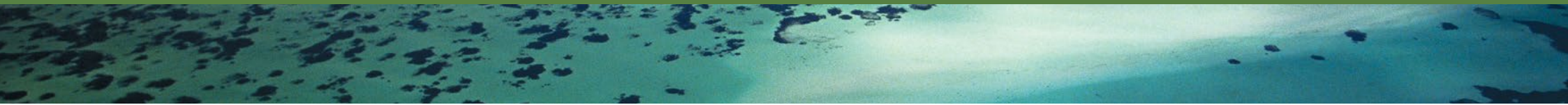




Strategic Plan 2021-2025

Summary



**Strengthening
Aboriginal Regional
Communities**

OUR VISION

Strengthening Aboriginal Regional Communities.

OUR MISSION

To build sustainable Aboriginal Community Organisations and empower Aboriginal and Torres Strait Islander people to lead their communities.

OUR VALUES

Respect

Empowerment

Sustainability

Collaboration

Integrity

Respect for Culture

We honor and celebrate the rich cultural heritage of Aboriginal and Torres Strait Islander peoples.

Community Empowerment

We believe in the strength and capability of our communities to lead and inspire change.

Sustainability

We are committed to building lasting and resilient organizations that support our communities for generations to come.

Collaboration

We foster partnerships and work together to achieve our common goals.

Integrity

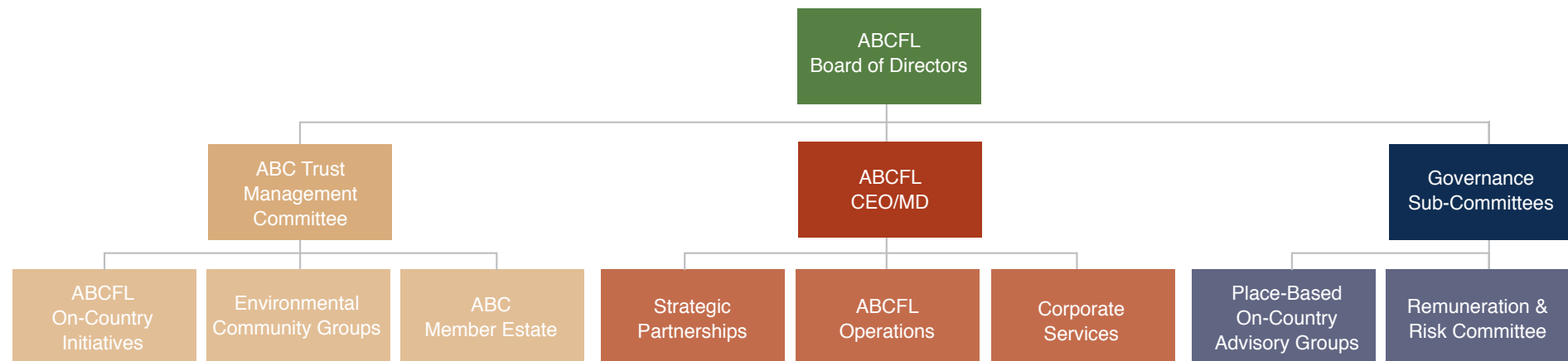
We operate with transparency, honesty, and accountability in all our actions.

Our Governance Structure

ABCFL is a company limited by guarantee and is administered through a majority held Aboriginal Board. Its operational and strategic partnerships are managed through its leadership team. ABCFL is a recognised charity through the Australian Charities and Not-for-profits Commission, the ABCFL constitution holds a public fund, the ABC Trust, which is regulated by the Department of Environmental Regulation Office. The Board is responsible for the role and functionality of the Trust which is administered through an independent management committee.

Board of Directors

The Board, which is appointed annually by its members, represent experienced and knowledgeable Aboriginal and non-Aboriginal leaders. With their specialised skills, the Board Members Working together, jointly recognising the roles and responsibilities placed on the Foundation's cultural competency, corporate governance, and leadership structures. As the business continues to evolve the Board has introduced specific sub-committees to manage its overall accountabilities.



We advise that this document may contain images of people who have passed away.

**Strengthening
Aboriginal Regional
Communities**

2021-2025 Key Performance Areas, Goals and Objectives

1 Leaders of Traditional Ecological Knowledge

Goal

Provide a place for leadership of Traditional Ecological Knowledge.

Objectives

- 1.1:** Our programs will lead the use of Traditional Ecological Knowledge (TEK). Provide a culturally appropriate place for learning and knowledge transfer.
- 1.2:** We will continue to assist and inform our partners and wider community to understand and lead the use of TEK, incorporating it within mainstream science and programs.

2 Working with Community Partners and Environmental Collaborators

Goal

To strategically collaborate with environmental focused community and/or business partners.

Objectives

- 2.1:** Identify new income streams and integrate them into our environmental service delivery.
- 2.2:** Continuing to form trusted partners with Aboriginal community service providers through shared knowledge and expertise.

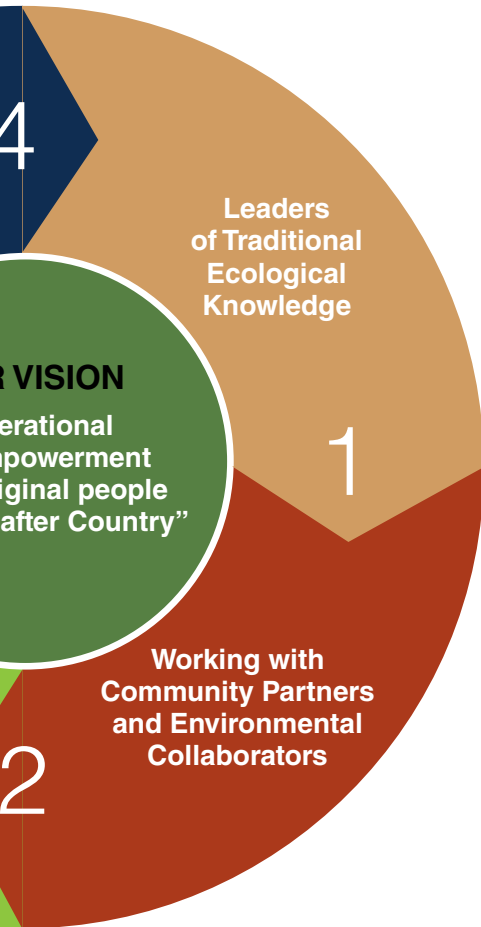
Responsive and
Community-Led
Innovation

3

Regional
Place-Based
Service
Delivery

OUR
Gen
self-em
for Abori
"Looking





3 Regional Place-Based Service Delivery

Goal

To offer placed-based programs and services to strengthen and promote ABCFL while aligning with regional community plans.

Objectives

- 3.1:** To increase ABCFL footprint by identifying new regional service delivery areas.
- 3.2:** Enhance ABC On-Country Programs and Services in a non-intrusive way.

4 Responsive and Community-Led Innovation

Goal

To be responsive and innovative to meet the needs of our environment and communities, whilst ensuring strong governance and leadership.

Objectives

- 4.1:** Develop innovative platforms that promote our environmental and community initiatives.
- 4.2:** We stay committed to supporting our environmental and community needs through a capacity building approach.



2021-2025 Operational Strategies

against our Key Performance Areas

On-Country EDUCATION

Leaders of Traditional Ecological Knowledge:

- Resources developed are to be lead and endorsed by Traditional Ecological Knowledge Advisor's across our footprint.

Working with Community Partners and Environmental Collaborators:

- Work collaboratively to embed our On-Country Learning Framework, supporting Aboriginal children to transition back to school.

Regional Place-Based Service Delivery:

- Tailor programs and resources to support place-specific community and family needs. Respecting local protocols and existing relationships.

Responsive and Community-Led Innovation:

- Provide accessible resources to support educators, to address Aboriginal attendance barriers in the education space.

On-Country CARE

Leaders of Traditional Ecological Knowledge:

- Embed the importance placed on TEK through connection to country, to improving both personal and environmental care.

Working with Community Partners and Environmental Collaborators:

- Work collaboratively to improving access to, and increased engagement of country, addressing both personal and environmental care barriers.

Regional Place-Based Service Delivery:

- Offer place-specific programs and services, which focus on both care for our people and for our environment.

Responsive and Community-Led Innovation:

- Listen and response to local community needs to access country, to support both personal and environmental care benefits.





On-Country RESEARCH AND DEVELOPMENT

Leaders of Traditional Ecological Knowledge:

- Lead and influence the importance of TEK, used as a foundation for On-Country Land and Sea Management Programs.

Working with Community Partners and Environmental Collaborators:

- Seek out change makers which acknowledge the importance of collaborative partnerships, through incorporating an On-Country approach.

Regional Place-Based Service Delivery:

- Develop evidence-based or research-based programs, providing information made available to support the growing need to remain connected to country.

Responsive and Community-Led Innovation:

- Work to ensure resources and programs, developed locally, are both innovative and respected by the wider community.

On-Country ENTERPRISE

Leaders of Traditional Ecological Knowledge:

- Ensure all Land and Sea Management based businesses we lead, are established to empower TEK.

Working with Community Partners and Environmental Collaborators:

- Build revenue through partnerships increasing our regional footprint, employment targets and On-Country impact.

Regional Place-Based Service Delivery:

- Secure, increase and/or develop Aboriginal owned/lead enterprises aimed to increase equity and employment.

Responsive and Community-Led Innovation:

- Invest in locally developed ideas, creating a space to support innovation, equity, revenue and employment.

**Strengthening
Aboriginal Regional
Communities**



To view the full strategic
plan go to our website:
www.abcau.com.au

Contact us

POSTAL ADDRESS

PO Box 310
Carnarvon
WA 6701

CONTACTS

On-Country team:
admin@abcau.com.au

Media Enquiries:
oncountry@abcau.com.au



@ABCFoundationLtd



@abcfoundationltd

Internal images by: LE's Photography and Montage Photography
ABCF-STRATSUMM-V8-220724

